

Alcas

1963

**YOUR PARTNER IN SWEET CREATIONS.**



**Alcas s.p.a.**  
 Headquarters  
 Via Livorno, 21/23  
 Firenze (FI)  
 Italy  
 Tel. +39 055 732591  
 VAT IT00786080481



PRODUCT

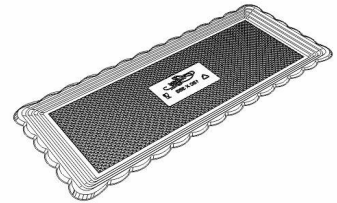
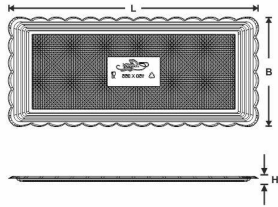
Item Code: 018020030 EAN Code: 8011248014362  
 Item Description: RECT. MEDORO TRAY 15X35 CM  
 Material: PET (Polyethylene Terephthalat) Technology: Molding Thermoforming  
 Color: Black

Restriction in use:



SPECIFICATIONS

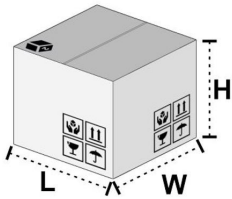
L - Length (mm): 350,00 Net Weight (g): 58,00  
 B - Width (mm): 150,00 Capacity (cm<sup>3</sup>):  
 H - Height (mm): 10,00  
 d1 - Internal Diameter (mm):  
 d2 - External Diameter (mm):



Note:

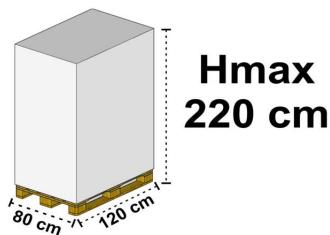
Technical data may vary without notice and are not binding. Weights, measures and thickness may vary by +/- 5%

PACKAGING



L - Length (cm): 32,50  
 W - Width (cm): 42,00  
 H - Height (cm): 12,50  
 Gross Weight (Kg): 6,35  
 Volume (L): 17,06

Box Code: SC779  
 Quantity pieces per pack: 50 Quantity boxes per pallet: 54  
 Pack Quantity: 2 Total Weight<sup>1</sup> (Kg): 342,90  
 Quantity pieces per box: 100



<sup>1</sup> The Total Weight does not include the pallet.

ENVIRONMENTAL LABELLING

	MATERIAL	RECYCLING
PRODUCT	<b>PET 1</b>	<b>PLASTICA PLASTIC</b>
PACKAGE	<b>BUSTA BAG LDPE 4</b>	<b>PLASTICA PLASTIC</b>
BOX	<b>PAP 20</b>	<b>CARTA PAPER</b>

Empty the packaging of its contents before recycling it. Check your local Municipal guidelines.

DOCUMENTATION

From 19/06/2023 you can directly download the Food Contact Materials Statement (FCMS) from a link in the invoice. Otherwise, you can request it at the address: [qualita@alcas.it](mailto:qualita@alcas.it)

Date of issue: 24/02/24

Legend:

